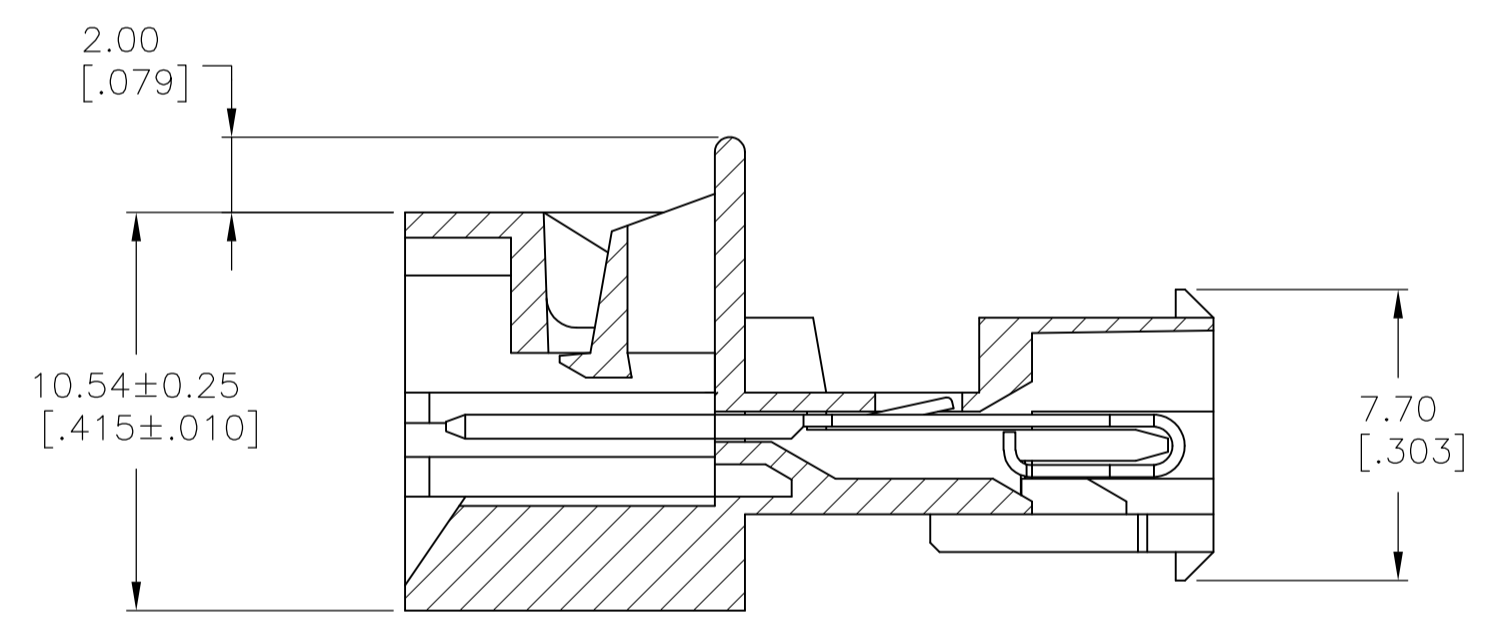
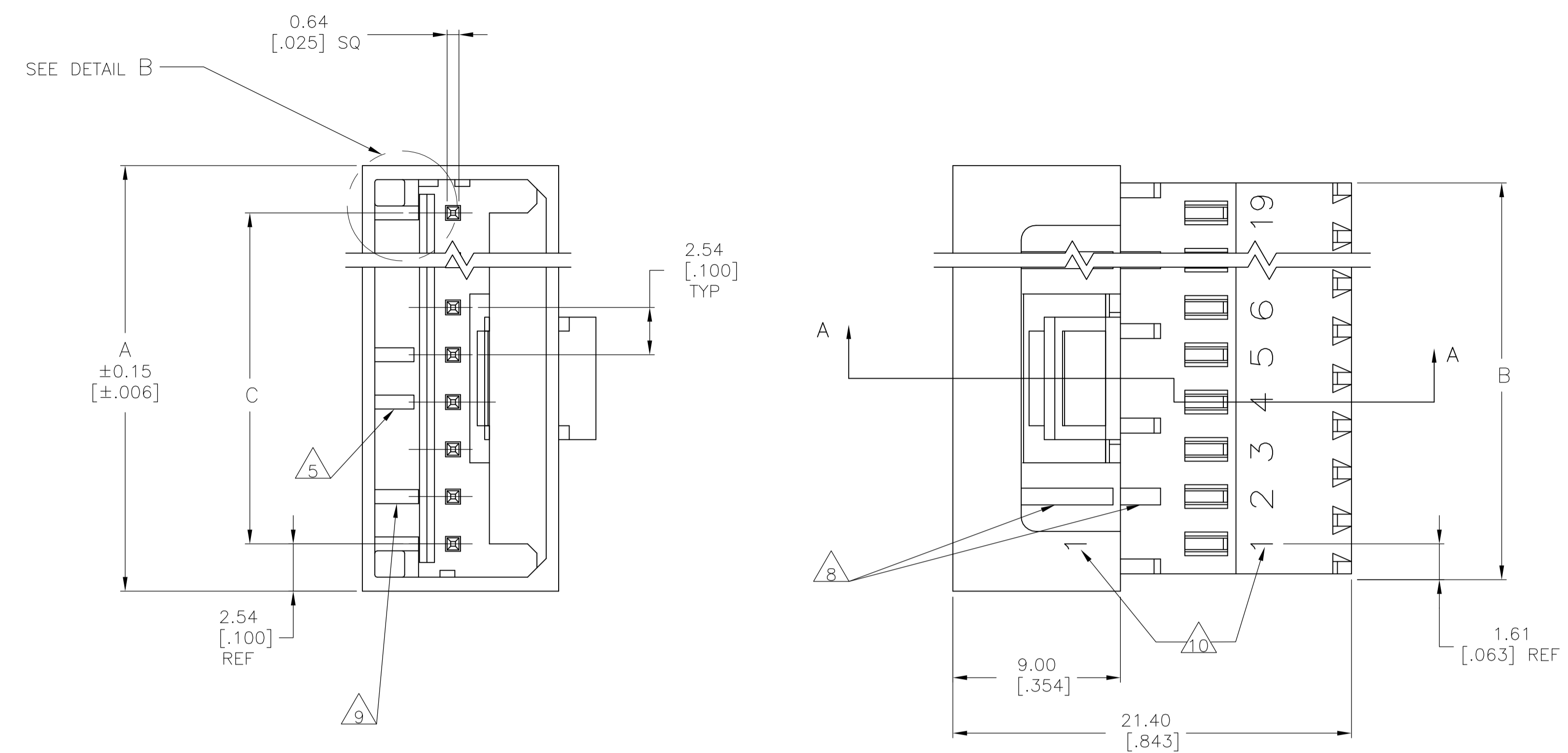
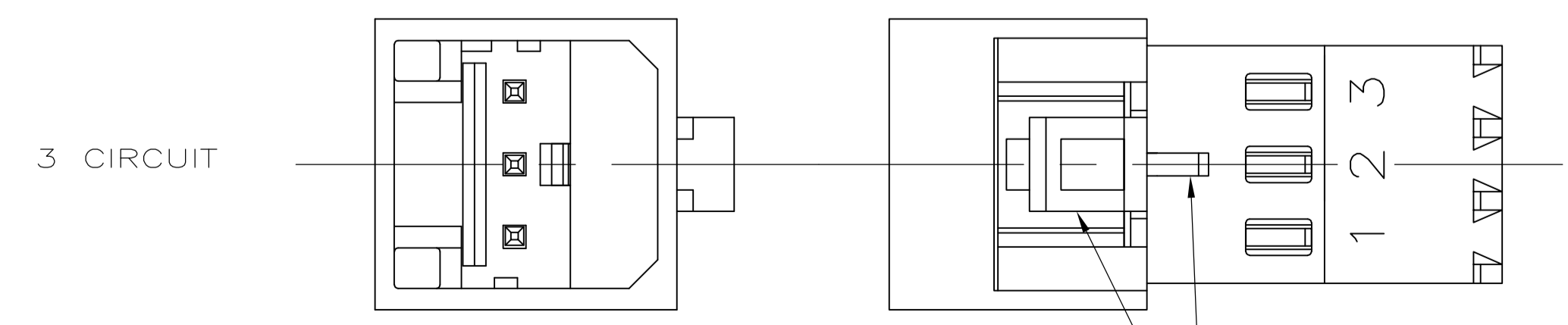
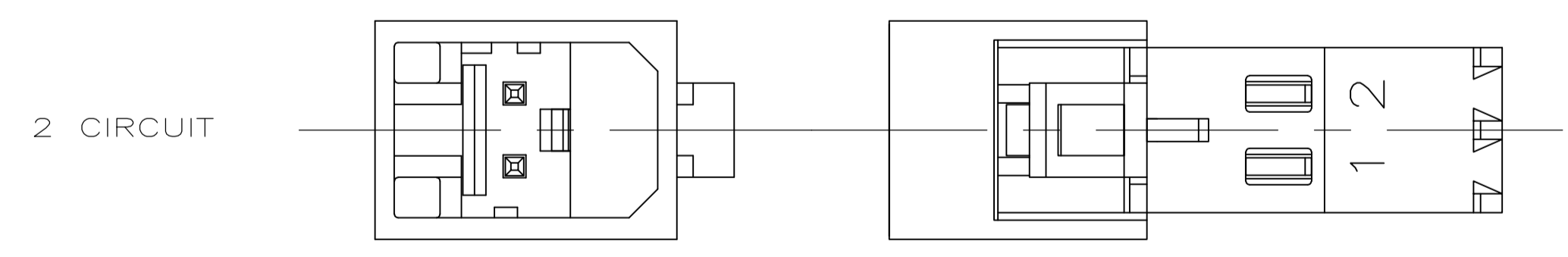


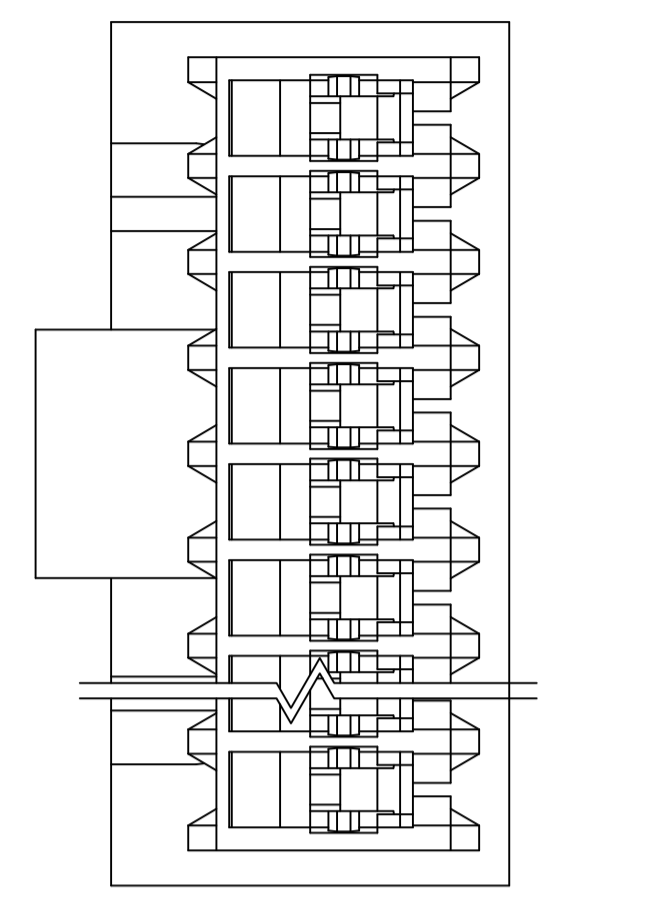
LOC		DIST		REVISIONS			
CM	00	REV	DATE	BY	APP'D	REV	DATE
		D1	02JUN08	HMR	DB		



SECTION A-A

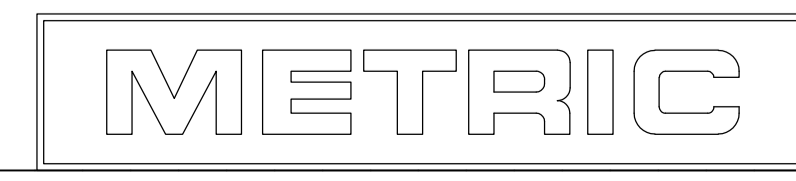


DETAIL A



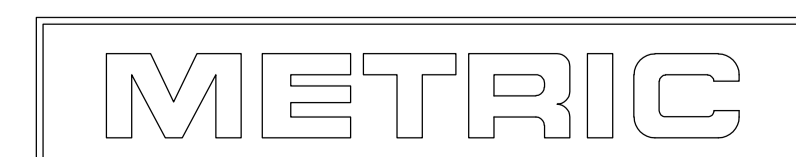
DETAIL B  
SCALE 10:1  
ALTERNATE CONFIGURATION

- 1 MATERIAL:  
HOUSING- NYLON UL94V-2 (WHITE).  
CONTACTS- 0.30 [.012] THK COPPER ALLOY  
DUAL PLATING : GOLD .00038[.000015] MIN THK  
ONPOST, BRIGHT TIN-LEAD 0.00203[.000080] MIN  
THK 647017-2 THRU 1-647017-9 OR MATTE TIN  
0.00203[.000080] MIN THK. FOR 3-647017-2 THRU  
4-647017-9 ON WIRE SLOT, WITH NICKEL UNDERPLATE  
.00127[.000050] MIN THK ALL OVER.
- 2 CONTACTS ACCEPT 24 AWG (0.2mm<sup>2</sup>) TIN PLATED  
SOLID, CONCENTRIC FUSED STRANDED, OR  
CONCENTRIC STRANDED (7 AND 19 STRAND) WIRE  
WITH 1.52 [.060] MAX INSULATION DIAMETER.
- 3 MATES WITH STANDARD MTA-100 CONNECTORS:  
OF THE SAME CIRCUIT SIZES  
WITH SIMILARLY PLATED CONTACTS  
WITH POLARIZING TABS-CIRCUIT SIZES 4-19 ONLY  
WITHOUT POLARIZING TABS-CIRCUIT SIZES 2 & 3.  
  
DOES NOT MATE WITH MTA-100 CONNECTORS:  
WITH POLARIZING TABS-CIRCUIT SIZES 2 & 3 ONLY.  
(SEE DETAIL A)  
WITH BLOCKED CIRCUITS -ALL CIRCUIT SIZES.  
NOT RECOMMENDED FOR MATING WITH MTA-100  
CONNECTOR WITHOUT POLARIZING TABS.  
CIRCUIT SIZES 4-19.
- 4 ACCESSORIES:  
REPLACEMENT IDC CONTACTS: 647031-3.  
COVERS: SEE TABLE
- 5 QUANTITY OF CENTRALLY POSITIONED RAILS  
VARIES WITH CIRCUIT SIZE. (SEE TABLE)  
LOCATION MAY DIFFER FROM EXAMPLE SHOWN.
- 6 DIMENSIONS IN BRACKETS ARE IN INCHES.
- 7 SIMILAR SIZED LOCK AND SINGLE TAB USED  
OR CIRCUITS 4 & 5.
- 8 QUANTITY OF GUSSET RIBS VARIES WITH  
CIRCUIT SIZE (SEE TABLE).  
LOCATION MAY DIFFER FROM EXAMPLE SHOWN.
- 9 INNER END RAIL PAIR NOT PRESENT FOR  
CIRCUIT SIZES 2 OR 3.
- 10 CIRCUIT ID MAY APPEAR FULLY NUMBERED OR SHOWING  
LOCATION 1 ONLY DEPENDING ON CIRCUIT SIZE.



THIS DRAWING IS A CONTROLLED DOCUMENT.		DRN R. LEWIS 30--98	Tyco Electronics Corporation Harrisburg, Pa 17105-3608
DIMENSIONS: mm [INCHES]		CHK R. SWING 30--98	Tyco Electronics
TOLERANCES UNLESS OTHERWISE SPECIFIED:		APP'D J. FILLIS 30--98	NAME 02JUN08
0 PLC ± -	1 PLC ± -	2 PLC ± 0.20 [.007]	PRODUCT SPEC ASSEMBLY, CLOSED END, 24 AWG
3 PLC ± -	4 PLC ± -	ANGLES ± -	APPLICATION SPEC
MATERIAL	FINISH	SIZE A1	CAGE CODE 00779
CUSTOMER DRAWING		DRAWING NO 647017	RESTRICTED TO
SCALE 5:1		SHEET 1 OF 2	REV D1

QTY OF GUSSET RIBS	QTY OF CENTRAL RAILS	MM	IN	MM	IN	MM	IN	NO. OF CIRCUITS	PART NO
4	2	45.72	1.800	48.95	1.927	50.80	2.000	19	4-647017-9
4	2	43.18	1.700	46.41	1.827	48.26	1.900	18	4-647017-8
4	2	40.64	1.600	43.86	1.727	45.72	1.800	17	4-647017-7
4	2	38.10	1.500	41.32	1.627	43.18	1.700	16	4-647017-6
4	2	35.56	1.400	38.78	1.527	40.64	1.600	15	4-647017-5
4	2	33.02	1.300	36.24	1.427	38.10	1.500	14	4-647017-4
4	2	30.48	1.200	33.70	1.327	35.56	1.400	13	4-647017-3
2	1	27.94	1.100	31.16	1.227	33.02	1.300	12	4-647017-2
2	1	25.40	1.000	28.62	1.127	30.48	1.200	11	4-647017-1
2	1	22.86	.900	26.08	1.027	27.94	1.100	10	4-647017-0
2	1	20.32	.800	23.54	.927	25.40	1.000	9	3-647017-9
2	0	17.78	.700	21.00	.827	22.86	.900	8	3-647017-8
0	0	15.24	.600	18.46	.727	20.32	.800	7	3-647017-7
0	0	12.70	.500	15.92	.627	17.78	.700	6	3-647017-6
0	0	10.16	.400	13.38	.527	15.24	.600	5	3-647017-5
0	0	7.62	.300	10.84	.427	12.70	.500	4	3-647017-4
0	0	5.08	.200	8.30	.327	10.16	.400	3	3-647017-3
0	0	2.54	.100	5.76	.227	7.62	.300	2	3-647017-2
4	2	45.72	1.800	48.95	1.927	50.80	2.000	19	1-647017-9
4	2	43.18	1.700	46.41	1.827	48.26	1.900	18	1-647017-8
4	2	40.64	1.600	43.86	1.727	45.72	1.800	17	1-647017-7
4	2	38.10	1.500	41.32	1.627	43.18	1.700	16	1-647017-6
4	2	35.56	1.400	38.78	1.527	40.64	1.600	15	1-647017-5
4	2	33.02	1.300	36.24	1.427	38.10	1.500	14	1-647017-4
4	2	30.48	1.200	33.70	1.327	35.56	1.400	13	1-647017-3
2	1	27.94	1.100	31.16	1.227	33.02	1.300	12	1-647017-2
2	1	25.40	1.000	28.62	1.127	30.48	1.200	11	1-647017-1
2	1	22.86	.900	26.08	1.027	27.94	1.100	10	1-647017-0
2	1	20.32	.800	23.54	.927	25.40	1.000	9	647017-9
2	0	17.78	.700	21.00	.827	22.86	.900	8	647017-8
0	0	15.24	.600	18.46	.727	20.32	.800	7	647017-7
0	0	12.70	.500	15.92	.627	17.78	.700	6	647017-6
0	0	10.16	.400	13.38	.527	15.24	.600	5	647017-5
0	0	7.62	.300	10.84	.427	12.70	.500	4	647017-4
0	0	5.08	.200	8.30	.327	10.16	.400	3	647017-3
0	0	2.54	.100	5.76	.227	7.62	.300	2	647017-2
DUST COVER	STRAIN RELIEF COVERS								
△4	△8	△5		C		B		A	



THIS DRAWING IS A CONTROLLED DOCUMENT.

DIMENSIONS: mm [INCHES]	TOLERANCES UNLESS OTHERWISE SPECIFIED:	DIN 30-98	30-98	Tyco Electronics Corporation
0 PLC ± -	1 PLC ± -	30-98	30-98	Harrisburg, Pa 17105-3608
2 PLC ± -	3 PLC ± -	Tyco Electronics		
4 PLC ± -	ANGLES ± -	NAME: MTA-100 POSTED CONNECTOR ASSEMBLY, CLOSED END, 24 AWG		
MATERIAL	FINISH	APPROVALS:	APVD: J. ELLIS	PRODUCT SPEC
△1	△1	APPLICATION SPEC	SIZE: A1	CAGE CODE: 00779
		WEIGHT: -	DRAWING NO: 647017	RESTRICTED TO: -
		CUSTOMER DRAWING	SCALE: 1:1	SHEET 2 OF 2